



# Veteranprodukter AB

Veteranprodukter AB  
 Industrivägen 7  
 SE-513 32 FRISTAD  
 SWEDEN

Tel: +46-33-206464  
 Fax: +46-33-269132  
 Email: info@vp-autoparts.com

## Decals

Observe! The decals are *not* in their natural size.



101



102



103



104



105



106



107



108



109



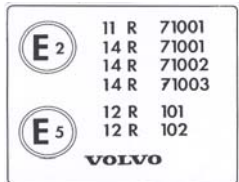
110



111



112



113



114



115



116



117



118



119



120



121



122



123



124



125



126



127

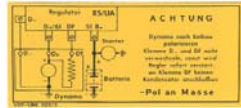




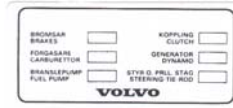
157

OBSERVERA!  
Denne vogn har en bremseværet med Stille-  
rentebremser og Anti-Lock. Vigtigt er runde  
etli uoplystet bremse- system! For hørd  
eller med motoren. Vognen kan i så  
fald glide av domkraften eller boken  
och följa med.  
Drag åt handbromsen vid haltbryter!  
OBS! Speciellig sköt användning.  
AB Volvo, Göteborg

158



159



160

VEHICLE EMISSION CONTROL INFORMATION

MODEL	YEAR	CLASS	EMISSIONS
S40-244	2002	2.0	120 g/km
S40	2002	2.0	120 g/km
S40	2002	2.0	120 g/km
S40	2002	2.0	120 g/km
S40	2002	2.0	120 g/km
S40	2002	2.0	120 g/km
S40	2002	2.0	120 g/km
S40	2002	2.0	120 g/km
S40	2002	2.0	120 g/km
S40	2002	2.0	120 g/km

161

MPV BY VOLVO GOTENBURG SWEDEN  
VOLVO SPARK FRONT 2022 LB  
K 1.8 1.8 1.8 1.8 1.8 1.8 1.8 1.8 1.8 1.8  
THIS VEHICLE CONFORMS TO ALL APPLICABLE  
FEDERAL MOTOR VEHICLE SAFETY STANDARDS IN  
EFFECT ON THE DATE OF MANUFACTURE SHOWN  
ABOVE.  
VEH IDENT NO:  
TYPE: BRONZE/BLACK CAR

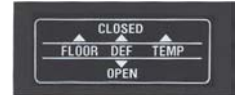
162



163



164



165

MILEAGE  
WHEN INSTALLED  
EQUIPPED WITH  
**CHAMPION**  
SPARK PLUGS  
PLUG TYPE

166

IMPORTANT  
WHEN RESETTING TRIP COUNTERS  
ROTATE KNOB CLOCKWISE  
UNTIL ALL COUNTERS ARE AT ZERO.

167



168

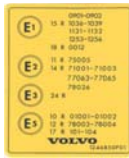
UPPLYSNINGAR OM AVGASKONTROLL

MOTORMODEL	MOTORFÖR	CHASSI
8571	8571	8571
8571	8571	8571
8571	8571	8571
8571	8571	8571
8571	8571	8571
8571	8571	8571
8571	8571	8571
8571	8571	8571
8571	8571	8571
8571	8571	8571

169

VEHICLE EMISSION CONTROL INFORMATION  
MANUFACTURED AS VOLVO, SWEDEN  
ENGINE VOLVO 8571 E  
ENGINE SPEED 5100 RPM  
MAX SPEED 100 MPH  
IGNITION TIMING 10° BTDC AT 800 RPM  
VEHICLE NOT CONNECTED  
AT TRANSMISSION POSITION NEUTRAL  
THIS VEHICLE CONFORMS TO U.S. E.P.A. OF NEW  
AND CALIFORNIA STATE REGULATIONS APPLICABLE  
TO 1977 MODEL YEAR NEW MOTOR VEHICLES  
VOLVO

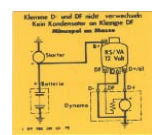
170



171

Jag GÅR hellre än  
jag kör japanskt

172



173



174



175



176



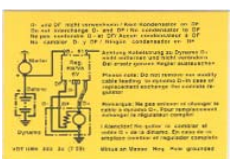
177



178



179



180



181



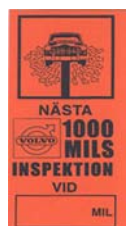
186



187



188



189



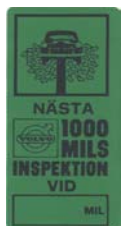
190



667698



191



192